



# VIEWPORT

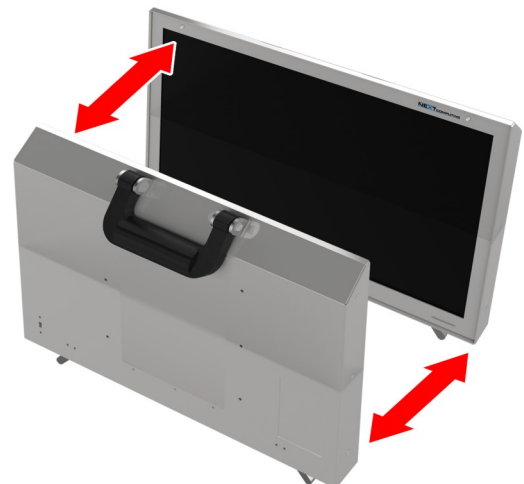
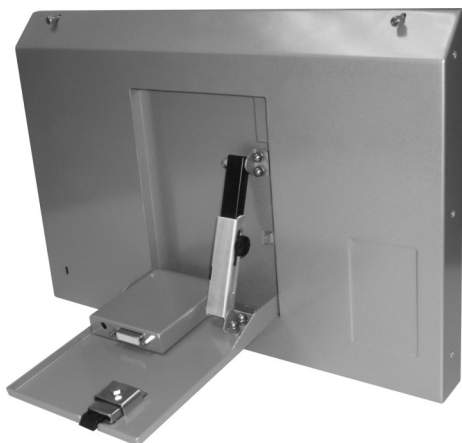
## Portable 17-inch LED Backlit Monitors for Enhanced Mobile Viewing and Productivity

For mobile professionals and laptop power-users, the current selection of portable laptop monitor options are often lacking in resolution, durability, or both. Engineers, creative professionals, sales representatives, and military or government customers often have to make compromises if they need multiple monitors for extending their mobile

workspace or giving memorable product demonstrations.

NextComputing presents the ViewPort mobile multi-monitor system for high-quality visualization on the go. The ViewPort 17-inch full HD monitor acts as a second or third display that can connect to via the DVI port or via an additional multi-display adapter.

- 1920x1080 - the highest resolution portable monitor available
- Built to withstand continuous use on the road
- Convenient and comfortable leather carrying handle
- Fully adjustable height and tilt angle
- Small form factor, 4 lbs. each



# VIEWPORT

## Display Specifications

- 1920 x 1080 resolution, 8-bit (16.7m colors)
- LED backlit
- Wide viewing angle of 65°h x 50°v
- Pixel pitch of 0.191mm x 0.191mm
- Minimum contrast ratio of 350CR
- Surface luminance of 180 Lwh
- 20ms rise time and decay time

## Video I/O

- DVI-D
- Multiple cable types available based on output of base system

## Power

- 110–240V, 50/60Hz, 1.7A auto switching external adaptor with 12VDC output; supports up to a 5.0A load
- International adapters available

## Dimensions

- Monitor 1: 15.75" W x 1.5" D x 10.75" H (40.01 x 3.81 x 27.31 cm)
- Monitor 2: 15.5" W x 1.5" D x 10.75" H (39.37 x 3.81 x 27.31 cm)

## Weight

- Each monitor: 4 lbs. (1.8 kg)
- Two monitors: 8 lbs (3.6 kg)

## Regulatory Compliance

- FCC, UL and CE

## Environmental

- Relative humidity (5-95%) non-condensing

### Operating:

- 5°C–45°C, 41°F–113°F (16GB RAM)
- 5°C–40°C / 41°F–104°F (24GB RAM)
- 5°C–35°C / 41°F–95°F (32GB RAM)
- 5°C–30°C / 41°F–86°F (48GB RAM)

### Non-Operating:

- -40°C–65°C, -40°F–149°F



*This document is for informational purposes only. Updates and changes can occur without notice. All logos, trademarks, and service marks are the property of their respective owners. Copyright © NextComputing all rights reserved.*

Rev 1.5 – 03/17